

Update on Green Valley Creek fish populations



*University of California
Sea Grant Extension Program*



UC Cooperative Extension and CA Sea Grant

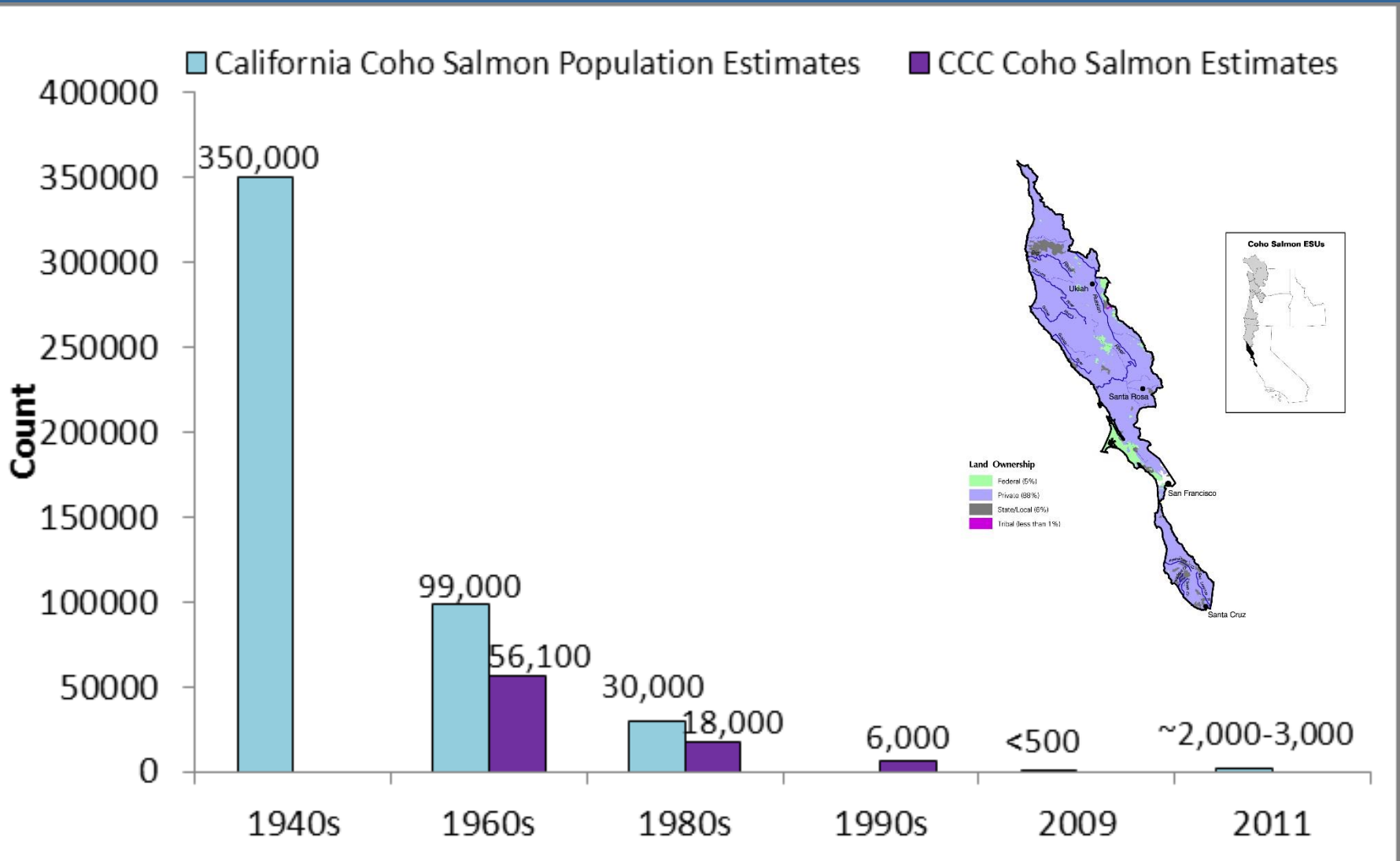


Program Goal:

Conduct monitoring and research to support salmon and steelhead recovery in the Russian River watershed

- Captive Broodstock Program
- CA Coastal Monitoring Program
- Coho Partnership
- Fish use of habitat enhancement projects

Decline of coho salmon



Source: NOAA fisheries, 2012



Russian River Watershed Historic Coho Streams

**Russian River
Coho Broodstock Program**

Historic Coho Streams*
Russian River Streams
Russian River Watershed

Sea Grant
California

UC
CE

SCRIPPS
OCEANOGRAPHY

*Historic coho salmon streams based on NOAA Technical Memorandum NMFS, Spence, et al. Oct. 2005.

0 2.5 5
Miles

Projection: NAD 1983 UTM Zone 10N
Map Prepared By: Andrew Bartshire, University of California



**Wild coho presence
in the early 2000's**

**Russian River
Coho Broodstock Program**

- Historic Coho Streams*
- Russian River Streams
- Russian River Watershed

*Historic coho salmon streams based on NOAA Technical Memorandum NMFS. Spence, et al. Oct. 2005.

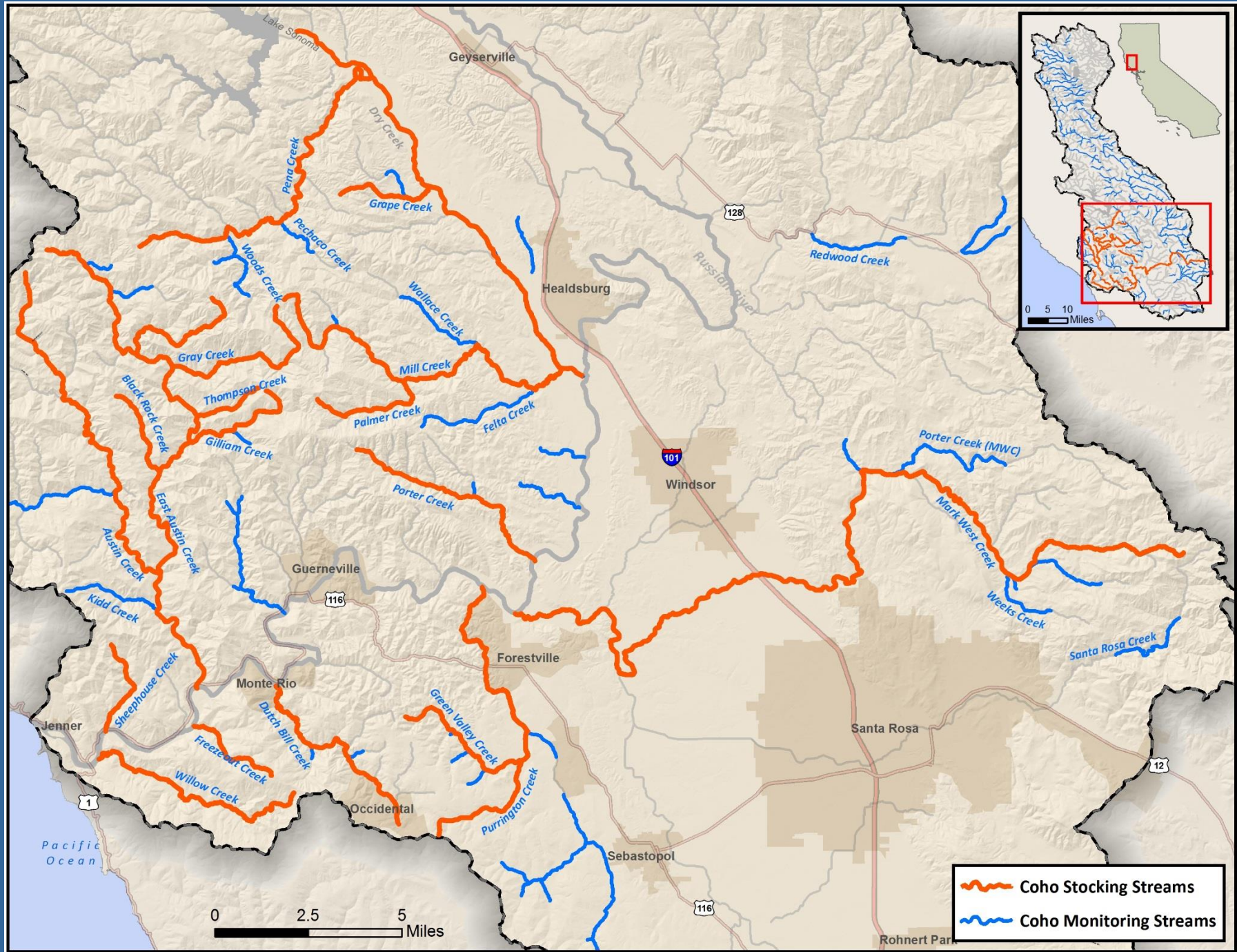
Sea Grant California
UC CE SCRIPPS OCEANOGRAPHY

Projection: NAD 1983 UTM Zone 10N
Map Prepared By: Andrew Bartshire, University of California

Russian River Coho Salmon Captive Broodstock Program

- Extinction of coho salmon in the Russian River basin imminent without immediate intervention
- In 2001, state and federal agencies collaborated with local organizations to create captive broodstock program
- Program Goal: Re-establish self-sustaining runs of native coho salmon in historic coho streams

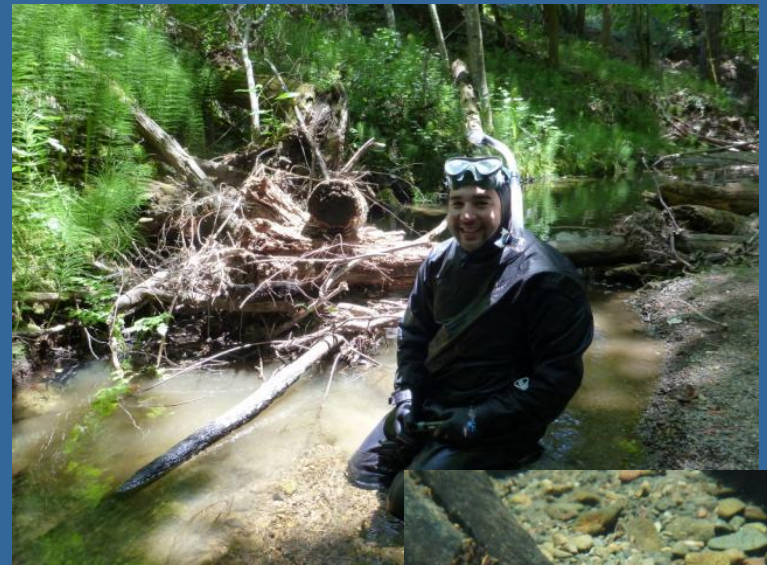




Adult spawner surveys



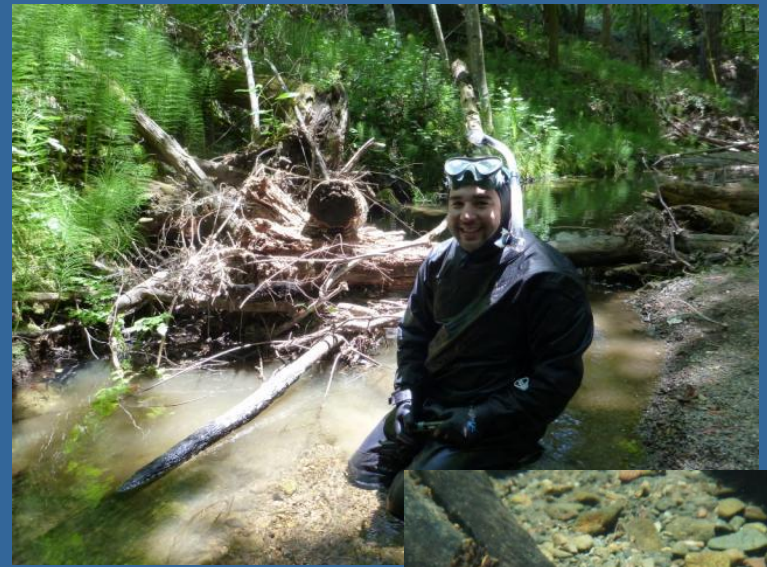
Adult spawner surveys



Juvenile snorkel surveys



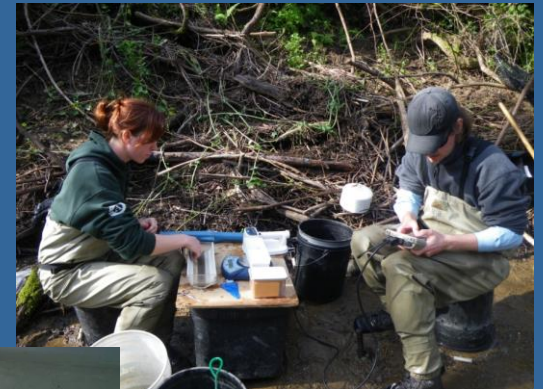
Adult spawner surveys



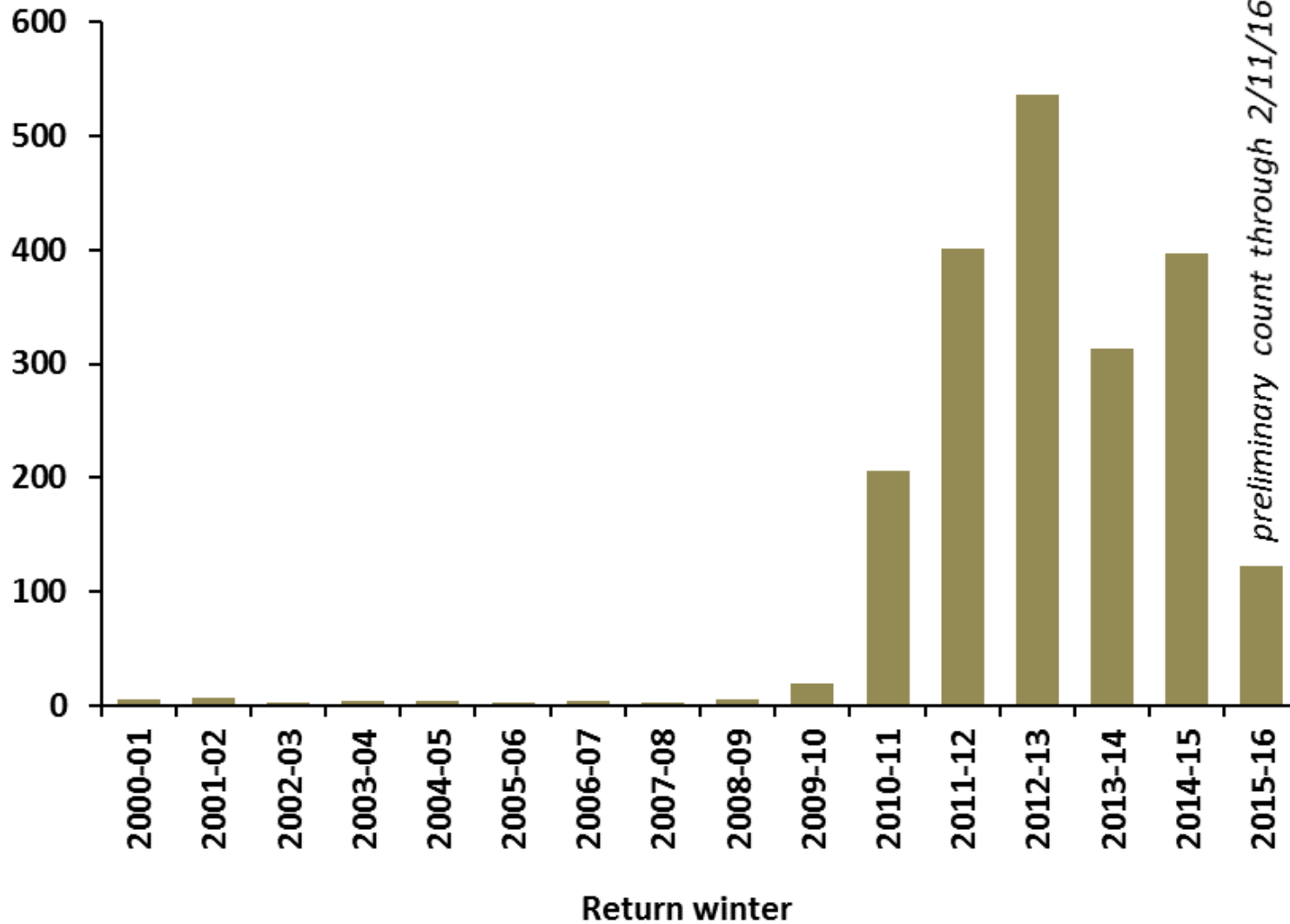
Juvenile snorkel surveys



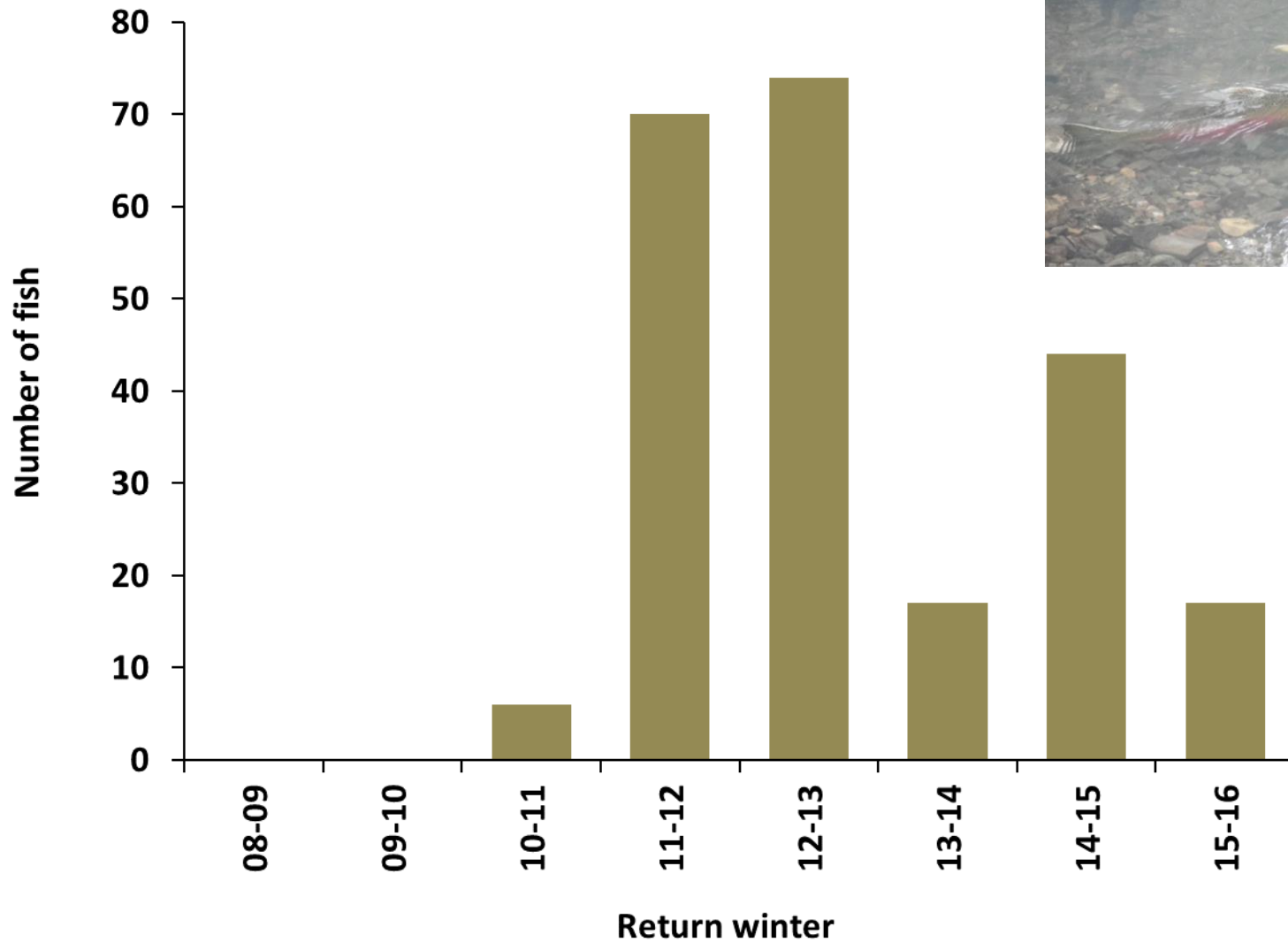
Downstream migrant smolt trapping



Estimated adult coho returns to the Russian River basin



Estimated adult coho returns to Green Valley Creek



**Note: first four years of estimates based on spawner surveys, last four years based on PIT tag detections*

Green Valley Creek juvenile presence

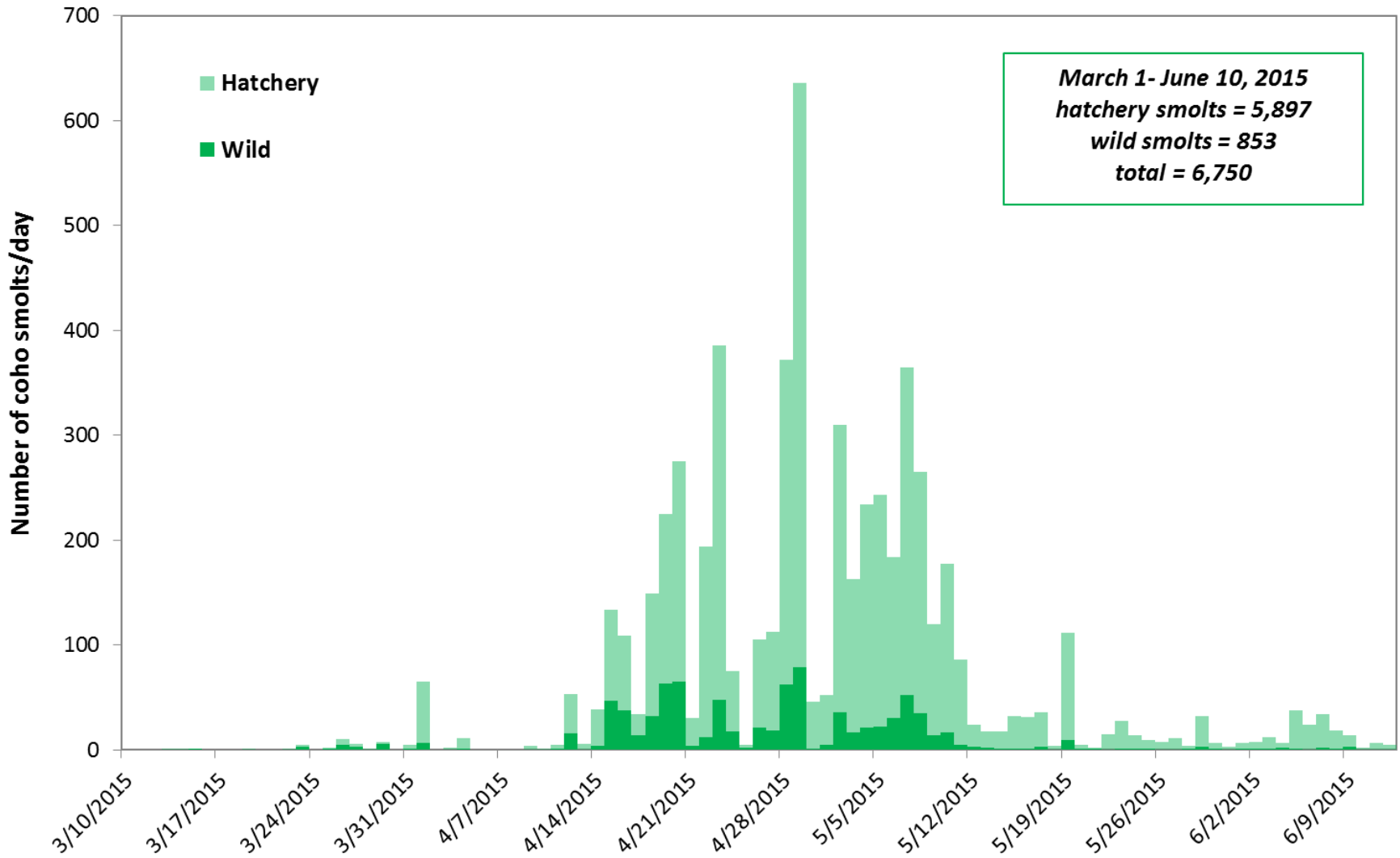


Summer 2015:

*estimated 2,294 wild coho
(23% of basinwide total)*



2015 Green Valley Creek coho salmon smolt count



Green Valley: critical refuge for coho



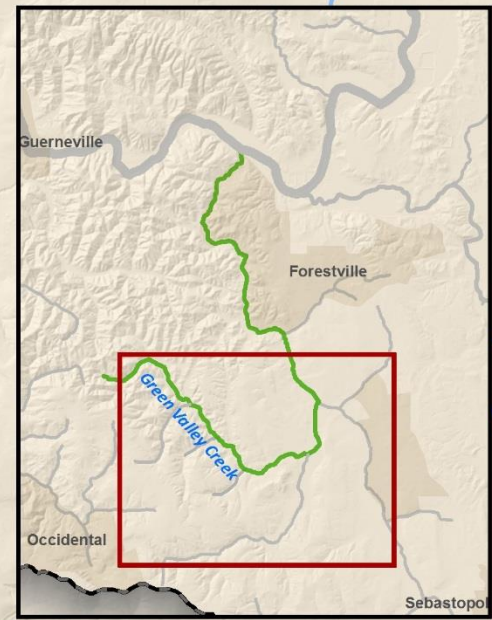
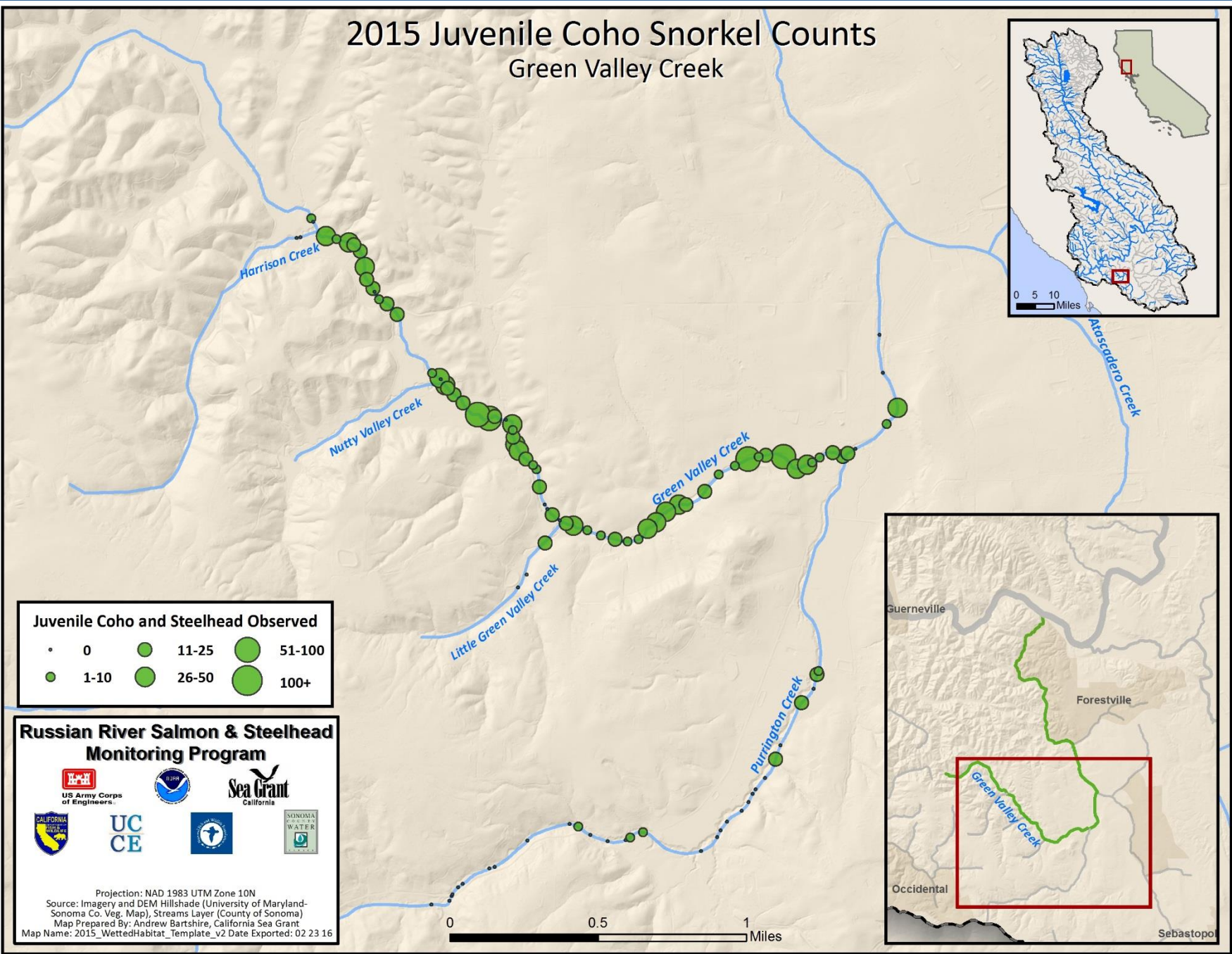
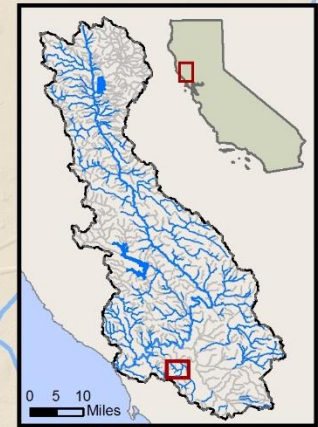
- Last viable coho run in Russian River basin
- Primary source of Broodstock Program fish
- High adult returns and juvenile presence
- Excellent oversummer survival in average flow years
- Good overwinter survival
- Large smolts emigrating to ocean

*Low summer
streamflow:
bottleneck to survival*



2015 Juvenile Coho Snorkel Counts

Green Valley Creek



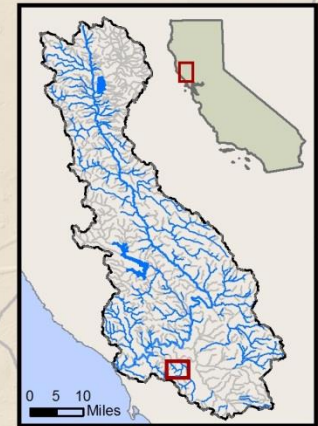
Juvenile Coho and Steelhead Observed

• 0	● 11-25	● 51-100
● 1-10	● 26-50	● 100+

Russian River Salmon & Steelhead Monitoring Program

Projection: NAD 1983 UTM Zone 10N
 Source: Imagery and DEM Hillshade (University of Maryland-Sonoma Co. Veg. Map), Streams Layer (County of Sonoma)
 Map Prepared By: Andrew Bartshire, California Sea Grant
 Map Name: 2015_WettedHabitat_Template_v2 Date Exported: 02 23 16

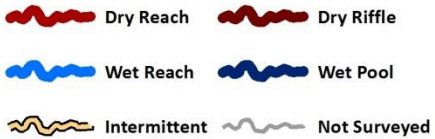
Wetted Habitat Survey Green Valley Creek



0 0.25 0.5 Miles

2015 Late Summer Wetted Habitat Condition

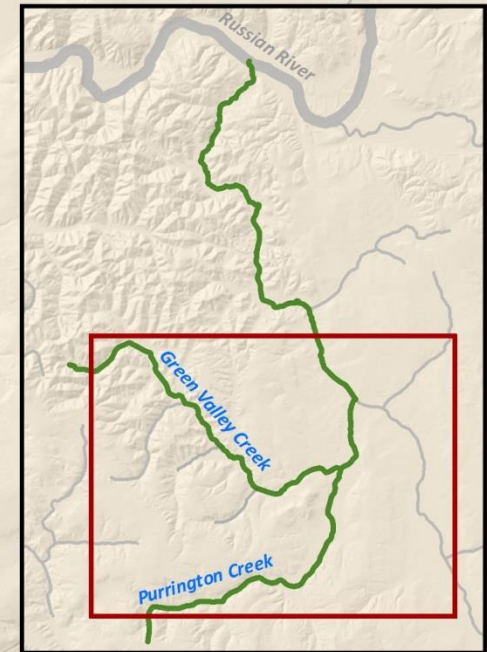
Surveys conducted August-October, 2015



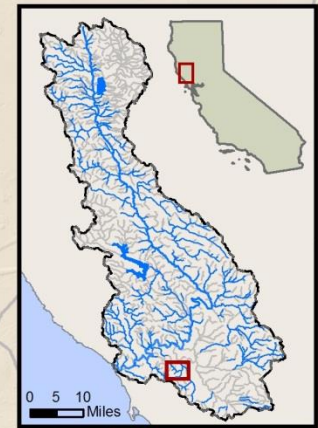
Russian River Salmon & Steelhead Monitoring Program



Projection: NAD 1983 UTM Zone 10N
Source: Imagery and DEM Hillshade (University of Maryland-Sonoma Co. Veg. Map), Streams Layer (County of Sonoma)
Map Prepared By: Andrew Bartshire, California Sea Grant
Map Name: 2015_WettedHabitat_Template_v2 Date Exported: 02 08 16



Juvenile Salmonid Counts & Wetted Habitat Green Valley Creek



2015 Late Summer Wetted Habitat Condition
Surveys conducted August-October, 2015

- Dry Reach
- Intermittent
- Wet Reach
- Not Surveyed

Summer 2015

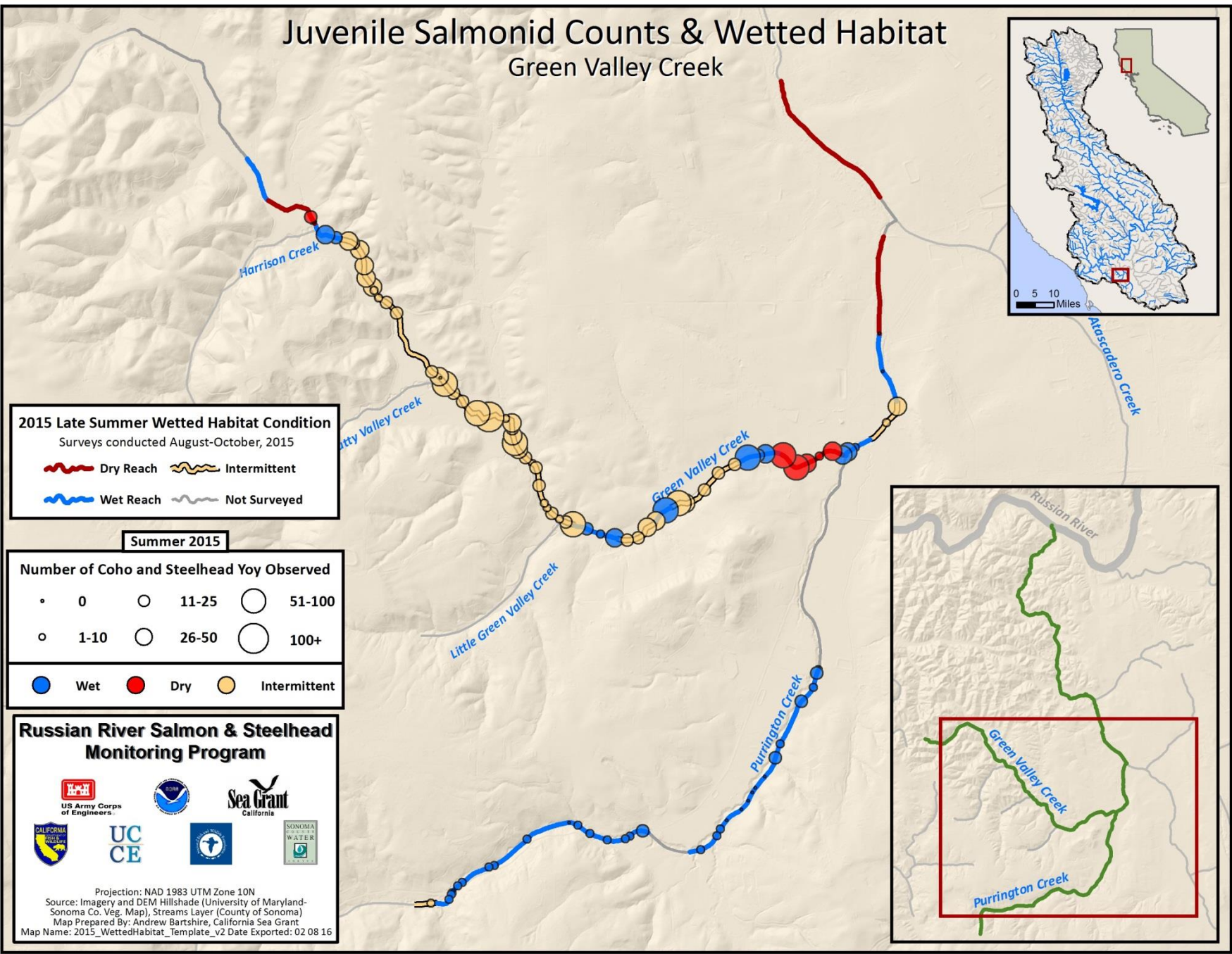
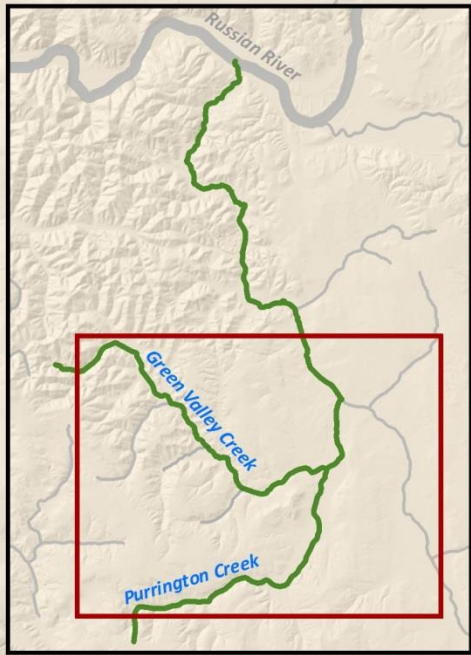
Number of Coho and Steelhead Yoy Observed

• 0	○ 11-25	○ 51-100
○ 1-10	○ 26-50	○ 100+

Wet
 Dry
 Intermittent

Russian River Salmon & Steelhead Monitoring Program

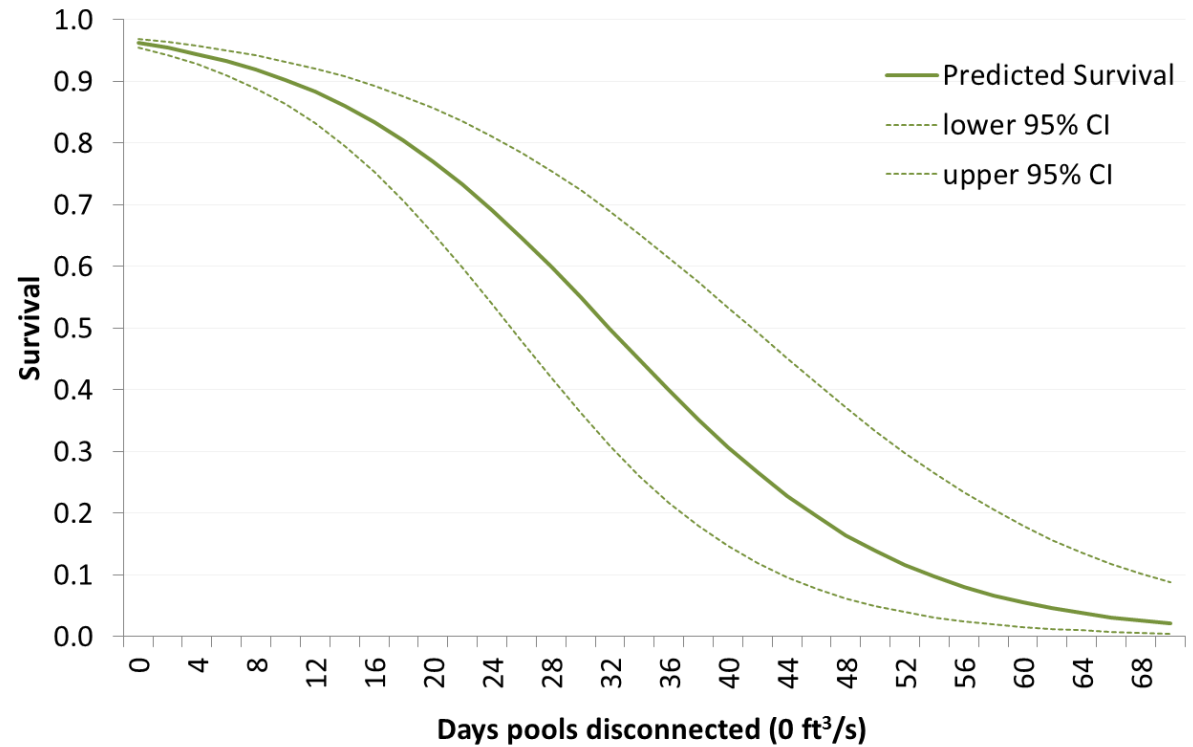
Projection: NAD 1983 UTM Zone 10N
 Source: Imagery and DEM Hillshade (University of Maryland-Sonoma Co. Veg. Map), Streams Layer (County of Sonoma)
 Map Prepared By: Andrew Bartshire, California Sea Grant
 Map Name: 2015_WettedHabitat_Template_v2 Date Exported: 02 08 16

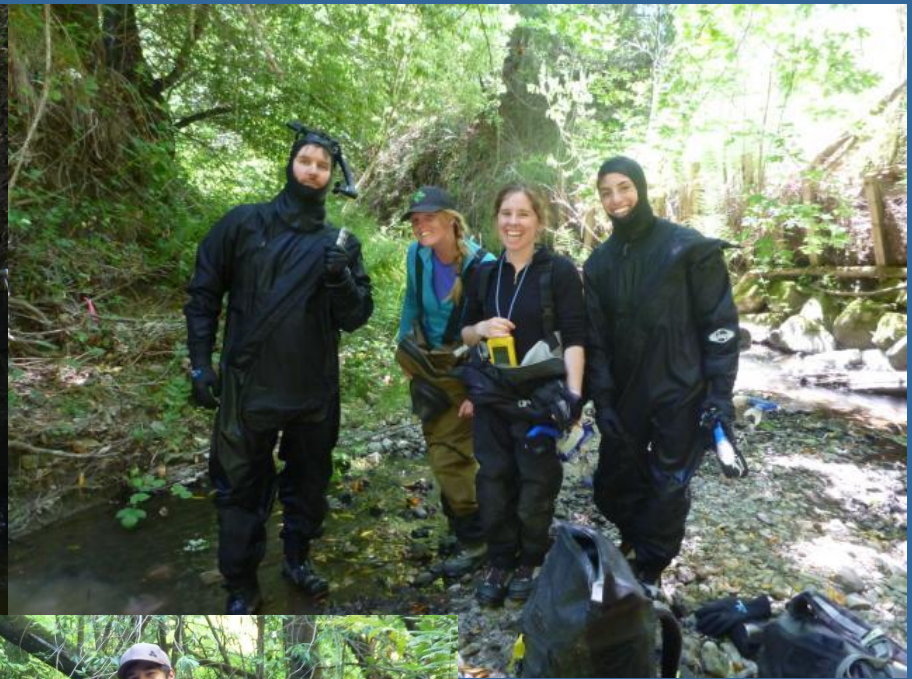


Connectivity is key

very small amount of water can keep pools connected

Survival and Flow: Green Valley reference reach 2010-2013





<http://ca-sgep.ucsd.edu/RussianRiverCoho>

****or search 'Russian River coho' on Google and click the first link****